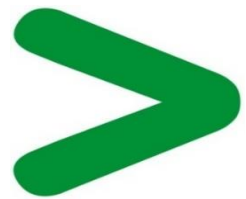


Product End of Life Instructions

iDisplay monitor 15" Touch DC DVI

Harmony Industrial PC



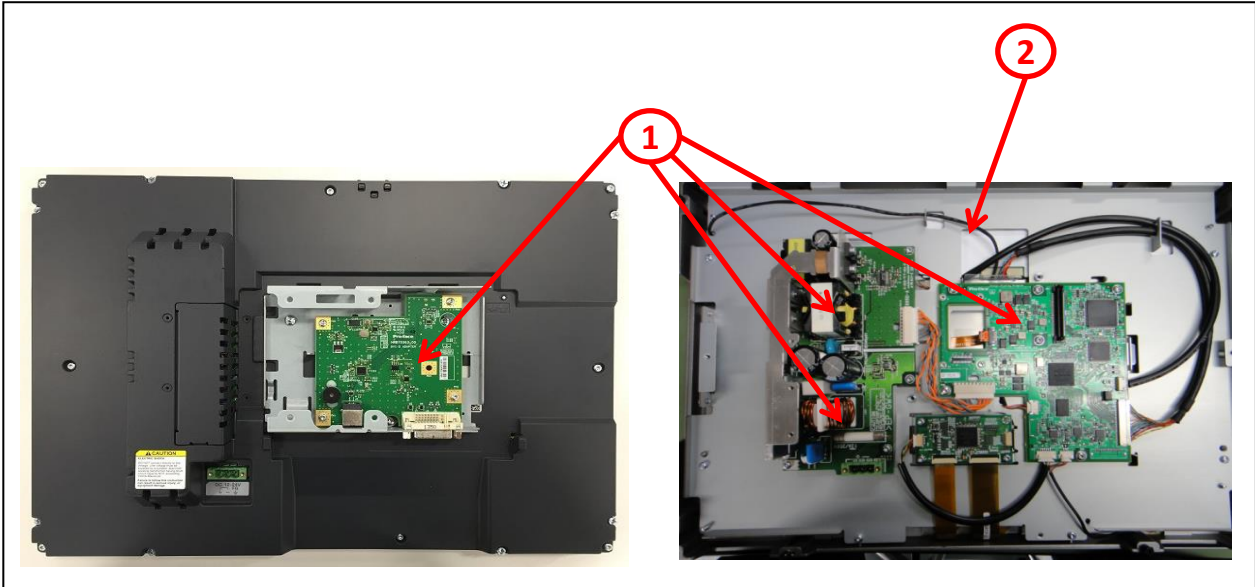


Potential disassembly risks

The Circularity profile provides information about preparation for re-use and treatment. It identifies the relevant EEE components and materials as well as their location. Safety instructions for product dismantling and depollution are provided into the User manual or maintenance guide



End of Life Instructions



Recommendation	Number on drawing	Component / Material	Weight (in g)	Comment
To be depolluted	1	Electronic Board (Communication) > 10cm ²	118	PCBA
To be depolluted	2	LCD (surface > 100cm ²) and all those back-lighted with gas discharge lamps	1050	LCD Screen
Other			4032	



Product description

Manufacturer identification	Schneider Electric Industries SAS
Brand name	Schneider Electric
Product function	industrial touchscreen display - 15" - Multi-touch screen - 24 Vdc
Product reference	HMIDID73DTD1
Additional similar product references	HMIDID64DTD1
Total representative product mass	5200 g
Representative product dimensions	296mm x 397mm x 67mm
Accessories	No
Date of information release	06-2024



Additional information

Legal information	This product family is in the scope of European Union directive 2012/19/EU on Waste Electrical and Electronic Equipment (WEEE). The product family must be disposed according to the legislation of the country. This document is intended for use by end of life recyclers or treatment facilities. It provides the basic information to assure an appropriate end of life treatment for the components and materials of the product.	
Recyclability potential	58%	Recyclability rate has been calculated based on REEECY'LAB tool developed by Ecosystem, for components/materials not covered by the tool, data from the "ECO' DEEE recyclability and recoverability calculation method" was taken. If no data was found a conservative assumption was used (0% recyclability).

Schneider Electric Industries SAS

Country Customer Care Center
<http://www.se.com/contact>

35, rue Joseph Monier
 CS 30323
 F- 92500 Rueil Malmaison Cedex

RCS Nanterre 954 503 439
 Capital social 928 298 512 €

www.se.com

Published by Schneider Electric

ENVEOLI2312001_V1

© 2024 - Schneider Electric – All rights reserved

06-2024