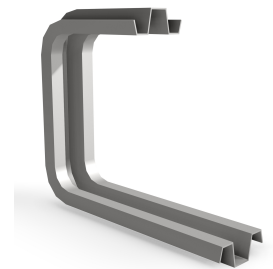


# REVIT CONTENT GUIDE

<b>Manufacturer:</b>	Cablofil
<b>File:</b>	Bracket-C-Cablofil-Fas_Profile.rfa
<b>Type Catalog:</b>	Not Applicable
<b>Rendering file:</b>	Not Applicable
<b>Schedule file:</b>	Cable_Tray-Wire_Mesh-Cablofil.rvt



## Instance Properties

<b>Dimension</b>	
Depth*	19.000
<b>Graphics</b>	
Has Snap Locations*	<input checked="" type="checkbox"/>
<b>Identity Data</b>	
Equipment Number*	
Part Description*	19 In. Universal C Bracket for Cablofil Wire Mesh Cable Tray
Part Number*	FAS C 400

## Type Properties

The family contains the following 1 types:  
Standard (Values for this type are shown below)

<b>Constraints</b>	
Default Elevation	48.000
<b>Dimension</b>	
Height*	8.270
Width*	2.706
<b>Identity Data</b>	
Copyright*	Copyright © Cablofil
Date Last Modified*	January 21, 2018
Description*	See Part Description
Equipment Abbreviation*	CTMA
Family Version*	1.1
Manufacturer*	Cablofil
Model*	See Part Number
Model Disclaimer*	For More Information, Contact Cablofil
Original Creation Date*	April 10, 2013
Product Documentation Link*	<a href="http://www.legrand.us/cablofil/cable-tray-wire-mesh/wall-mounting/fas-c.aspx#.UWiQ9rXvuCk">http://www.legrand.us/cablofil/cable-tray-wire-mesh/wall-mounting/fas-c.aspx#.UWiQ9rXvuCk</a>
Type Image	-1
URL*	<a href="http://www.legrand.us/cablofil.aspx#.UWXgl5PvuCk">http://www.legrand.us/cablofil.aspx#.UWXgl5PvuCk</a>
<b>Materials</b>	
Product Material*	28939

Half tone text in the property tables indicates that the value is locked from editing.

\*Indicates Shared Parameter and can be scheduled

## Loading and Placing into the Project:

One “Data Devices” family is supplied and can be loaded into a Revit project through all traditional methods. The Bracket requires a Face to be placed within the project (i.e. Cable Tray). Also, ensure that the visibility settings within the project are modified to have the Data Devices category visible.

## **Project Behavior:**

Within the type and instance properties dialogues, the user will find useful information for scheduling purposes such as Height, Width, Depth and other unique properties of the model. In “Identity Data” the user will find information specific to Cablofil and the model, i.e.: family revision information, Cablofil copyright information, part description, product URL and other specific data. \*See scheduling description below.

The model is placed on the underside of any existing Cablofil cable tray. Once placed, the user can utilize the 3D pullgrip to extend the length of the bracket. The bracket length is limited to only round up to the nearest available product.

## **Instance Parameters:**

In the “Instance Parameters”, the user has the following options to modify:

- Equipment Number – For tagging each placed instance.

- Has Snap Locations – For toggling the visibility of the snap locations. These lines represent the equipment hole locations.

## **Type Parameters:**

Each type represents a manufactured product. Therefore, the type parameters should not be modified by the user for standard configuration. Please note:

- Product Documentation Link – Directs a webpage to the products online listing.

- Equipment Abbreviation – For filtering schedules. \*See scheduling description below.

- Family Version – Indicates the current version of the family.

## **Visibility:**

For best performance, all model geometry is turned off in Plan View and represented through masking regions and symbolic/model lines that update automatically when a user changes types.

## **Rendering:**

When the family file is loaded into the project, standard Cablofil materials are imported. These may be modified, though ensure that the modification selection matches an actual manufacturer supplied option.

## **Schedule Creation:**

Cablofil products may be scheduled utilizing the schedule view in the given project file. Select and copy (Ctrl-C) the schedule from the sheet view and paste it (Ctrl-V) into a sheet in your project. The schedule filters are set to look for only those units designated with Manufacturer as “Cablofil” and Equipment Abbreviation as “CTMA”. The schedules contain special functionality for displaying the configured order numbers of the different selected types.