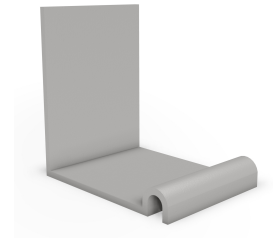




## REVIT CONTENT GUIDE

|                        |                                   |
|------------------------|-----------------------------------|
| <b>Manufacturer:</b>   | Cablofil                          |
| <b>File:</b>           | Mount-Wall-Cablofil-Snap_In.rfa   |
| <b>Type Catalog:</b>   | Not Applicable                    |
| <b>Rendering file:</b> | Not Applicable                    |
| <b>Schedule file:</b>  | Cable_Tray-Wire_Mesh-Cablofil.rvt |



### Instance Properties

| Identity Data     |  |
|-------------------|--|
| Equipment Number* |  |
| Part Description* | Snap-in Wall Hanger Support for 4 In. Wide Cablofil Wire Mesh Cable Tray |
| Part Number*      | CAT 30/41  |

### Type Properties

The family contains the following 1 types:  
Standard (Values for this type are shown below)

| Constraints                 |   |
|-----------------------------|---|
| Default Elevation           | 48.000  |
| Dimension                   |   |
| Depth*                      | 1.600   |
| Height*                     | 1.600   |
| Width*                      | 1.180   |
| Identity Data               |   |
| Copyright*                  | Copyright © Cablofil  |
| Date Last Modified*         | January 21, 2018  |
| Description*                | See Part Description  |
| Equipment Abbreviation*     | CTMA  |
| Family Version*             | 1.1   |
| Manufacturer*               | Cablofil  |
| Model*                      | See Part Number   |
| Model Disclaimer*           | For More Information, Contact Cablofil  |
| Original Creation Date*     | April 10, 2013  |
| Product Documentation Link* | <a href="http://www.legrand.us/cablofil/cable-tray-wire-mesh/wall-mounting/cat-30-41.aspx#.UWhEbrXvuCk">http://www.legrand.us/cablofil/cable-tray-wire-mesh/wall-mounting/cat-30-41.aspx#.UWhEbrXvuCk</a> |
| Type Image                  | -1  |
| URL*                        | <a href="http://www.legrand.us/cablofil.aspx#.UWXgl5PvuCk">http://www.legrand.us/cablofil.aspx#.UWXgl5PvuCk</a>   |
| Materials                   |   |
| Product Material*           | 8888  |

Halftone text in the property tables indicates that the value is locked from editing.

\*Indicates Shared Parameter and can be scheduled

### Loading and Placing into the Project:

One "Data Devices" family is supplied and can be loaded into a Revit project through all traditional methods. The Bracket requires a Face to be placed within the project (i.e. Cable Tray). Also, ensure that the visibility settings within the project are modified to have the Data Devices category visible.

## Project Behavior:

Within the type and instance properties dialogues, the user will find useful information for scheduling purposes such as Height, Width, Depth and other unique properties of the model. In “Identity Data” the user will find information specific to Cablofil and the model, i.e.: family revision information, Cablofil copyright information, part description, product URL and other specific data. \*See scheduling description below.

The model is placed on the underside of any existing Cablofil cable tray.

## Instance Parameters:

In the “Instance Parameters”, the user has the following options to modify:

- Equipment Number – For tagging each placed instance.

## Type Parameters:

Each type represents a manufactured product. Therefore, the type parameters should not be modified by the user for standard configuration. Please note:

- Product Documentation Link – Directs a webpage to the products online listing.

- Equipment Abbreviation – For filtering schedules. \*See scheduling description below.

- Family Version – Indicates the current version of the family.

## Visibility:

For best performance, all model geometry is turned off in Plan View and represented through masking regions and symbolic/model lines that update automatically when a user changes types.

## Rendering:

When the family file is loaded into the project, standard Cablofil materials are imported. These may be modified, though ensure that the modification selection matches an actual manufacturer supplied option.

## Schedule Creation:

Cablofil products may be scheduled utilizing the schedule view in the given project file. Select and copy (Ctrl-C) the schedule from the sheet view and paste it (Ctrl-V) into a sheet in your project. The schedule filters are set to look for only those units designated with Manufacturer as “Cablofil” and Equipment Abbreviation as “CTMA”. The schedules contain special functionality for displaying the configured order numbers of the different selected types.