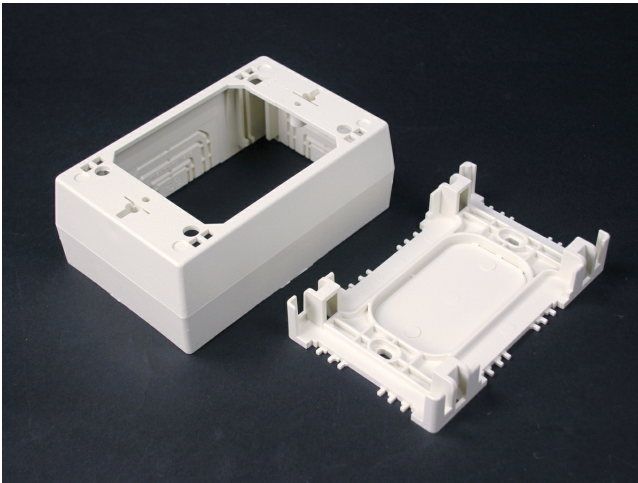




Wiremold
NM2000 Sure-Snap Deep Device Box Fitting
Part No. NM2048-WH



Cover snaps onto base - no screws required. Cover has twistouts on all sides. Rectangular KO in base for extension to wall box. Used with 2700, 2800, 2900 and NM2000 Series Raceways. 4 3/4" L x 3" W x 1 3/4" D (121mm L x 76mm W x 44mm D). 1-Gang.

Features & Benefits

Cover snaps onto base - no screws required. Cover has twistouts on all sides. Rectangular KO in base for extension to wall box. Used with 2700, 2800, 2900 and NM2000 Series Raceways. 4 3/4" L x 3" W x 1 3/4" D (121mm L x 76mm W x 44mm D). 1-Gang.

Specifications

General Info

Product Line	Wiremold	Color	White
UPC Number	786776567007	Country Of Origin	United States
Material	Plastic	Product Series	NM2000 Series
Installation Location	On Wall	Application Sector	Commercial, Residential
Standard	cULus Listed Base & Blank Cover: File E90378 Guide RJBT. Multioutlet Assemblies: File E15191 Guide PVGT. Fittings: File E90377 Guide RJPR. Base & Blank Cover & Plugmold Series w/Snapcoil Harness: Meets Article 386 of NEC. Meets Section 12-3032 of CEC. Plugmold Wired Sections: Meets Article 380 of NEC. Meets Section 12-3032 of CEC.	Warranty Type	1-Year from Installation or 2-Years from Day of Sale
Type	Raceway Device Box		

Dimensions

Product Width US	3.0 in	Product Weight US	0.27 lb
------------------	--------	-------------------	---------

Product Depth US 1.75 in

Product Length US 4.75 in

Listing Agencies / 3rd Party Agencies

cULus ListingNumber E90377

cULus Listed Yes

Trade Programs

USMCA Yes

Additional Information

RoHS Compliant Yes

Technical Information

Is Pre-Wired No

Number of Gangs 1

Indoor/Outdoor Indoor

Voltage 600.0 V
