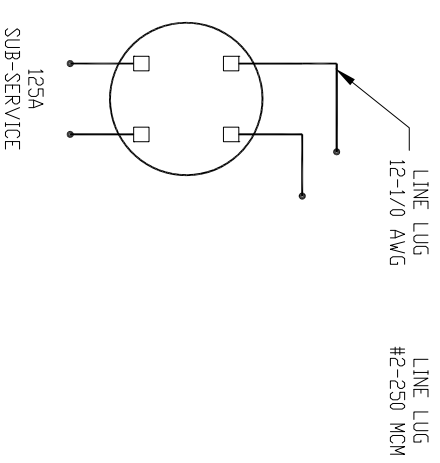
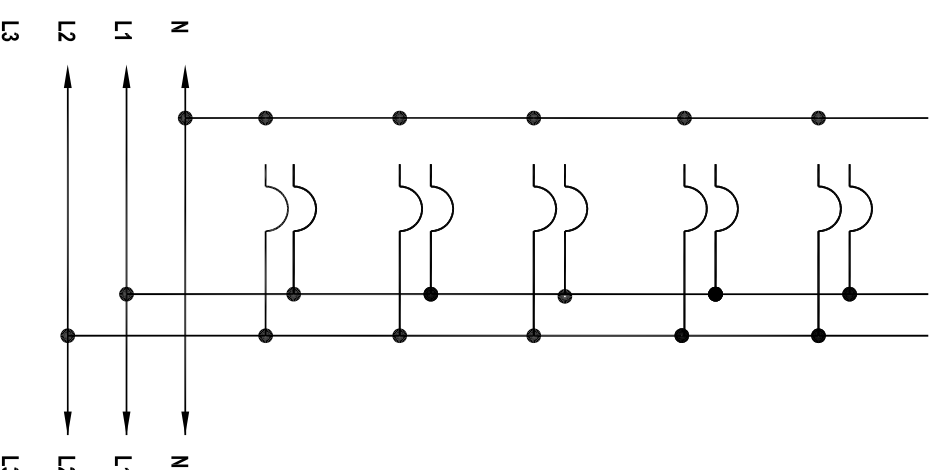


AMPERE RATING	SHORT CIRCUIT CURRENT RATING	CATALOG NUMBER	SERIES	SUB SERVICES	VERTICAL BUS BAR RATING	SERVICE GROUND LUG AWG	VERTICAL BUS BAR MATERIAL
125/200	22/65KA	MC443LB		5	700	6 X #4-14	ALUMINUM 3/4 X 3/4 IN TIN PLATING

125 AMP 4 JAW METER BASE IN
4 SUB-SERVICES
200 AMP 4 JAW METER BASE IN
1 SUB-SERVICE
ASSEMBLY APPROVED FOR 240V
CSA LR13488
APPLY TORQUE ON LUGS
75-100 LB-IN



VERTICAL BUS BAR 700 AMP MAXIMUM

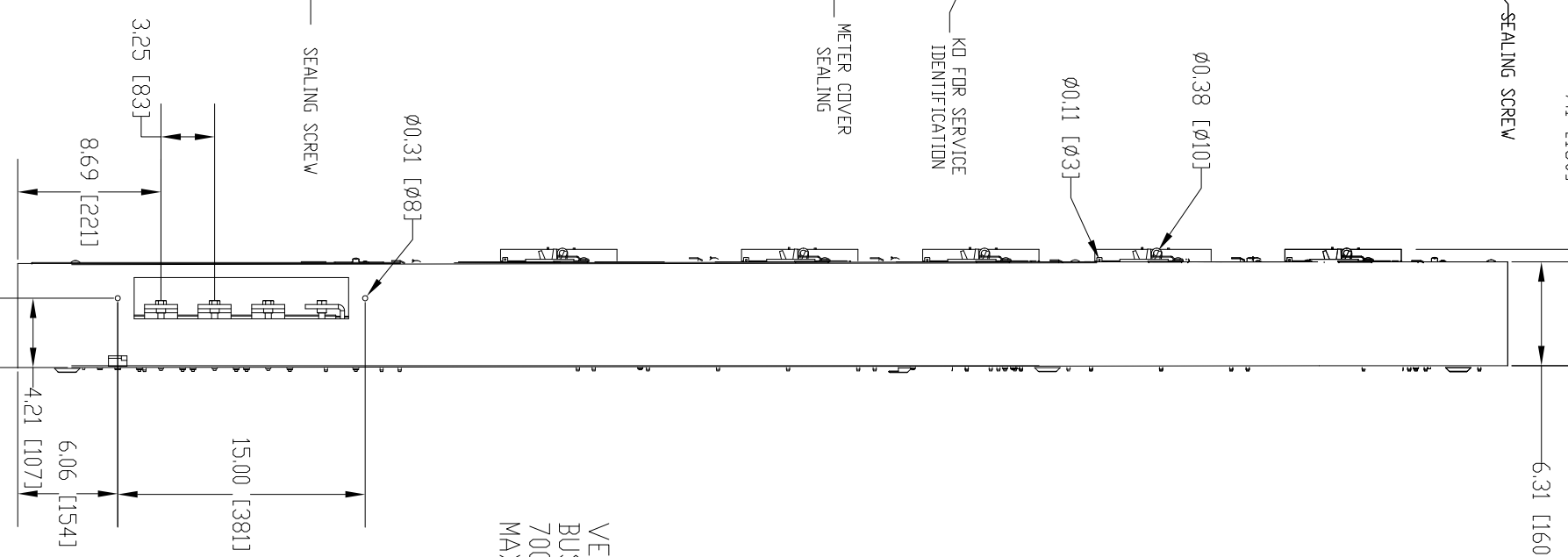


SUB-SERVICE CIRCUIT BREAKER
TYPE QDB / QDB VH
4 SUB-SERVICES
TYPE QDM/QGM 1 SUB-SERVICE
MINIMUM WIRE CONDUCTOR (FROM BREAKER TO METER)
#1 CU-AL 125AMP MAXIMUM
75°C CONDUCTOR ONLY

NOTES:

- FINISH GRAY BAKED ENAMEL POWDER ANSI 49
- COAT PAINT OVER CLEANED COLD ROLLED STEEL
- GAUGE 16 (0.054 IN)
- NEMA TYPE 1 ENCLOSURE
- MAXIMUM SYSTEM VOLTAGE 120/240 VAC 1P-3W 50-60 HZ
- CSA-FILE PER REFERENCE 151178 REPORT 1160363 (LR 13488-42)
- SUITABLE FOR UNDERGROUND OR OVERHEAD SERVICE
- RINGTYPE METER MAIN 4 JAWS 5 SUB SERVICES

SYMBOL	CONDUIT SIZE	
	IN	MM
A	0.50	13
B	0.75	19
C	1.00	25
D	1.25	32
E	1.50	38
F	2.00	51
G	2.50	64
H	3.00	76



Tolerancing Standard :
Units of measure : DUAL
INCHES/MILLIMETERS

METER CENTRE CANADA 240V



MC443LB

73293-080-02-MC443LB

Number: 00 Revision: 00 Sheet: 1/1

The information is highly confidential and is the exclusive property of Schneider Electric. Copyright reserved. This drawing must not be used for any purpose other than that expressly permitted by the owner of the rights. This drawing must be returned to the owner when the purpose has elapsed.