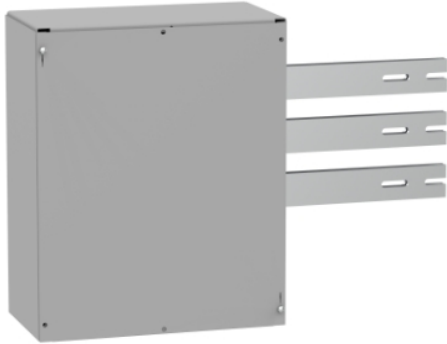


# Product data sheet

## Characteristics

# MCTB6003L

Tap box, Square D Meter Centres, 1 phase, 3 wire, 240V, 600A, 3 lugs



### Main

Range of Product	Square D
Product or Component Type	Connector
Product destination	Tap-off box
Bus rated current	600 A

### Complementary

Product Certifications	CSA
Height	18.03 in (458 mm)
Width	15.00 in (381 mm)
Depth	7.87 in (200 mm)
AWG gauge	AWG 1/0...750 kcmil copper or aluminium AWG 1/0...600 kcmil copper or aluminium AWG 1/0...250 kcmil copper or aluminium
Wiring configuration	3-wire
Phase	1 phase

### Ordering and shipping details

Category	00199-DE5 MISC. SERVICE PARTS
Discount Schedule	DE5
GTIN	785901656999
Returnability	Yes
Country of origin	MX

### Packing Units

Unit Type of Package 1	PCE
Number of Units in Package 1	1
Package 1 Height	8.60 in (21.844 cm)
Package 1 Width	18.80 in (47.752 cm)
Package 1 Length	18.80 in (47.752 cm)
Package 1 Weight	31.93 lb(US) (14.483 kg)

### Offer Sustainability

California proposition 65	WARNING: This product can expose you to chemicals including: Lead and lead compounds, which is known to the State of California to cause cancer and birth defects or other reproductive harm. For more information go to <a href="http://www.P65Warnings.ca.gov">www.P65Warnings.ca.gov</a>
REACH Regulation	REACH Declaration
EU RoHS Directive	Compliant with Exemptions
Mercury free	Yes
RoHS exemption information	Yes